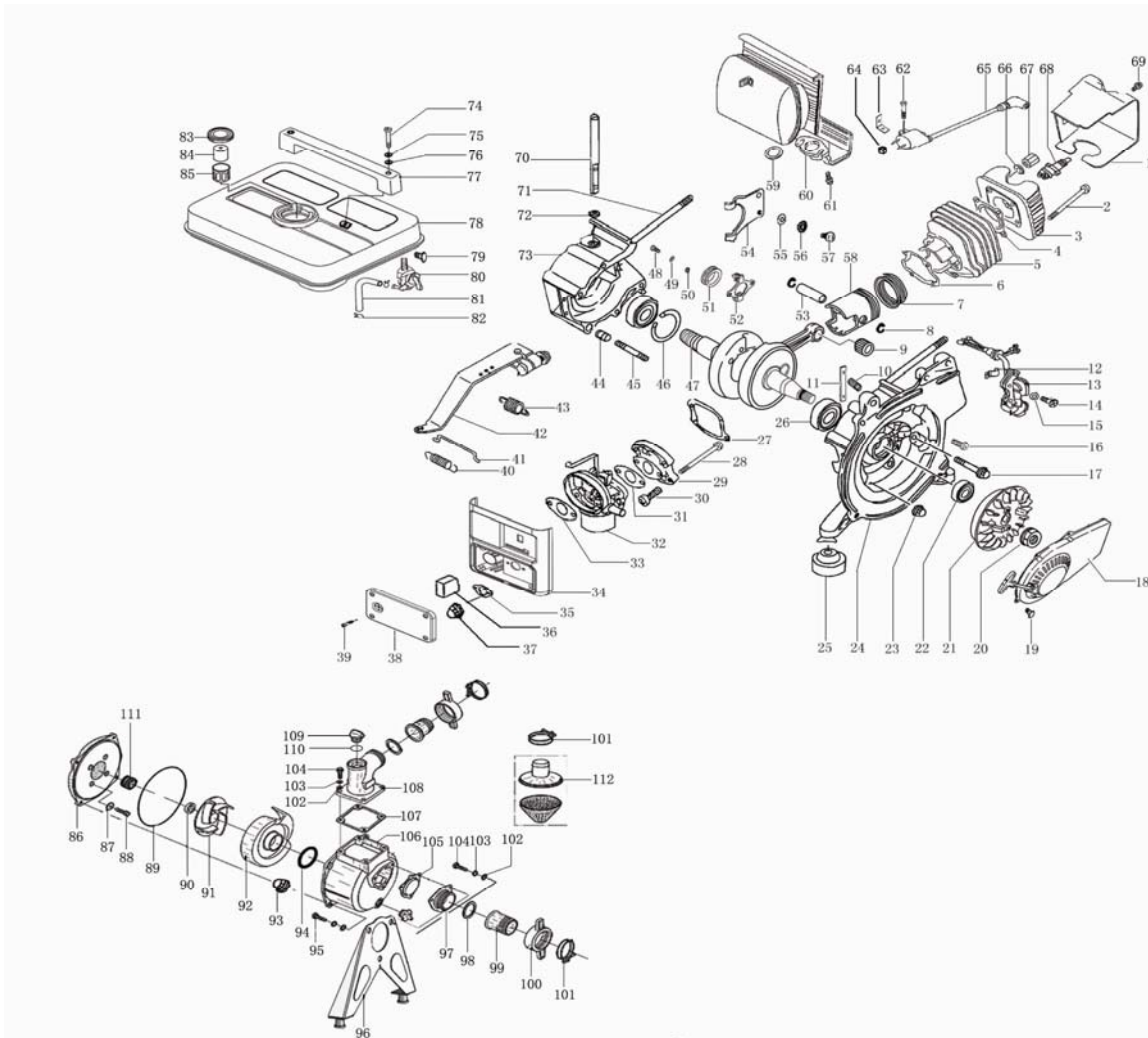


GP40-II



No.	CODE	DESCRIPTION	Qty.
1	3C9502001	cylinder head cover	1
2	3S22061051	bolt,flange M6×105	2
3	3C9502001	cylinder head	1
4	3C9502003	gasket,cylinder head	1
5	3C9502100	cylinder	1
6	3C9502004	gasket,cylinder	1
7	3C95032(01/02)	piston ring set	1
8	3C9503004	circlip	2
9	3C9503001	roller bearing	1
10	3C9505007	spring,compression	1
11	3C9505008	supporting plate	1
12	3C9504001	clamp	1
13	3C9504200	integrative portfire	1
14	3S27060162	screw M6×16	2
15	3S31061	spring washer Φ6	2
16	3S27060402	screw M6×40	1
17	3S22060502	bolt,flange	4
18	3C9503400C	recoil starter assembly	1
19	3S22060121	bolt M6×12	4
20	3S11101	nut ,crankshaft M10	1
21	3C9503008	flywheel	1
22	3S61203007	oil seal 20×30×7	2
23	3S12061	nut M6	2
24	3C9501002	crankcase,front	1

25	3C9501006	absorber	4
26	3S7106004	bearing 6004	2
27	3C9505003	valve base gasket	1
28	3S2506073	stub AM6×73	2
29	3C9505200	intake reed comp	1
30	3S22060201	bolt,flange M6×20	4
31	3C9505004	intake gasket	1
32	3C9505100	carburetor assembly	1
33	3C9505002	carburetor, plate B	1
34	3MGG950901	control panel assembly	1
35	3C9505001	carburetor, plate A	1
36	3C9504008	Air filter	1
37	3S12061	nut M6	2
38	3C9504006	control panel cover	1
39	3S29500151	Screw M5*15	4
40	3C9505011	spring,tension	1
41	3C9505010	rod,link	1
42	3C9505300	governor arm	1
43	3C9505009	spring,governor	1
44	3S5110014	pin 10×7×14	2
45	3S25060503	stud AM6×50	2
46	3C9501003	circlip	1
47	3C9503100A	crankshaft assembly	1
48	3S22060161	bolt M6×16	2
49	3S31061	spring washer Φ6	2
50	3S35061	plain washer Φ6	2
51	3C9503007	collar bush	1
52	3C9503300	weight comp	1
53	3C9503002	piston pin	1
54	3C9505006	governor fork	1
55	3S35032	plate washerΦ6	2
56	3S31032	spring washer Φ3	2
57	3S27030082	screw M3×8	2
58	3C9503005	piston	1
59	3C9502006	gasket,muffler	1
60	3C9502200P	muffler assembly	1
61	3S22060161	bolt,flange M6×16	2
62	3S22060201	Bolt M6*20	1
63	3C9505012	ignition coil assy seat	1
64	3S12061	Nut M6	1
65	3C9504400A	ignition coil assy	1
66	3S35061	washer,plate Φ6	2
67	3S1606118	nut M6	2
68	3C9504300	spark plug	1
69	3S22060121	bolt,flange M6×12	2
70	3C9505005	governor shaft	1
71	3S25061163	stud AM6×110	2
72	3S61061204	oil seal 6×12×4	1
73	3C9501001A	crankcase,rear	1
74	3S22060301	screw M6×30	2
75	3S31061	washer,spring Φ6	2
76	3S35061	washer Φ6	2
77	3C9506005A	handle	1
78	3C9506100S	fuel tank comp	1
79	3S22060161	Bolt M6*16	4
80	3C9506300	fuel tank cock assy	1
81	3C9506003	fuel pipe	1
82	3C9506004	pipe clip	2
83	3C9506200	cap assy	1
84	3C9506001	fuel cup	1
85	3C9506002	strainer	1
86	3G3040001	Pump cover	1
87	3G4050004	rubber washer	4
88	3S24080603	Inner hex bolt M8x60	4
89	3G3040003	O ring	1
90	3G3040006	porcelain seal	1
91	3G3040007	water pump impeller	1

92	3G3040008	volute casing	1
93	3S12081	nut M8	2
94	3G3040009	O ring	1
95	3S21080351	flange bolt M8X35	2
96	3C9505008A	Pump support	1
97	3G3040012	inlet flange	1
98	3G3040020	O ring	2
99	3G3040021	pipe joint	2
100	3G3040022	joint grip	2
101	3G3040023	Rear housing	3
102	3S35081	washer ϕ 8	11
103	3S31082	spring washer ϕ 8	11
104	3S22080251	bolt M8X25	9
105	3G3040011	check valve	1
106	3G3040010	housing of pump	1
107	3G3040014	rubber washer	1
108	3G3040015	outlet flange	1
109	3G3040013	plug packing	2
110	3G3040013A	O ring	
111	3G3040002	Mechanical seal	1
112	3G3040024	filter net	1